



东莞市德锐精密机械有限公司

Dongguan Derui Precision Machinery Co., Ltd.

**高精度后拉式气压筒夹夹头
产品说明书**

Specification of high precision cylinder-integrated collet chuck



台湾制造

Made in Taiwan

地址：东莞市寮步镇良边石大路 136 号

Add: No. 136, Shida Road, Liangbian, Liaobu Town, Dongguan City

Web: www.dr-precision.com

Shop: dr-chuck.en.alibaba.com

Tel: 0769-81103466

Fax: 0769-81103455

目录

Catalogue

1、产品尺寸..... 01

Dimension

2、如何安装? 02-03

How to installation?

3、筒夹安装..... 04

collet installation

4、筒夹防止转安装..... 05

The collet prevents rotating mounting

5、筒夹订购..... 06

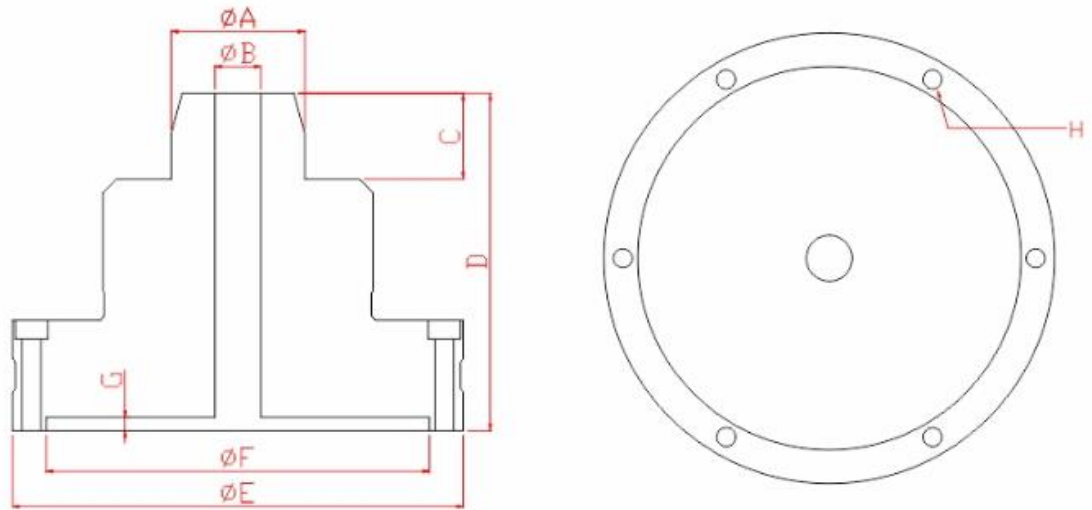
Collet order

6、保修证..... 07

The warranty card

产品尺寸

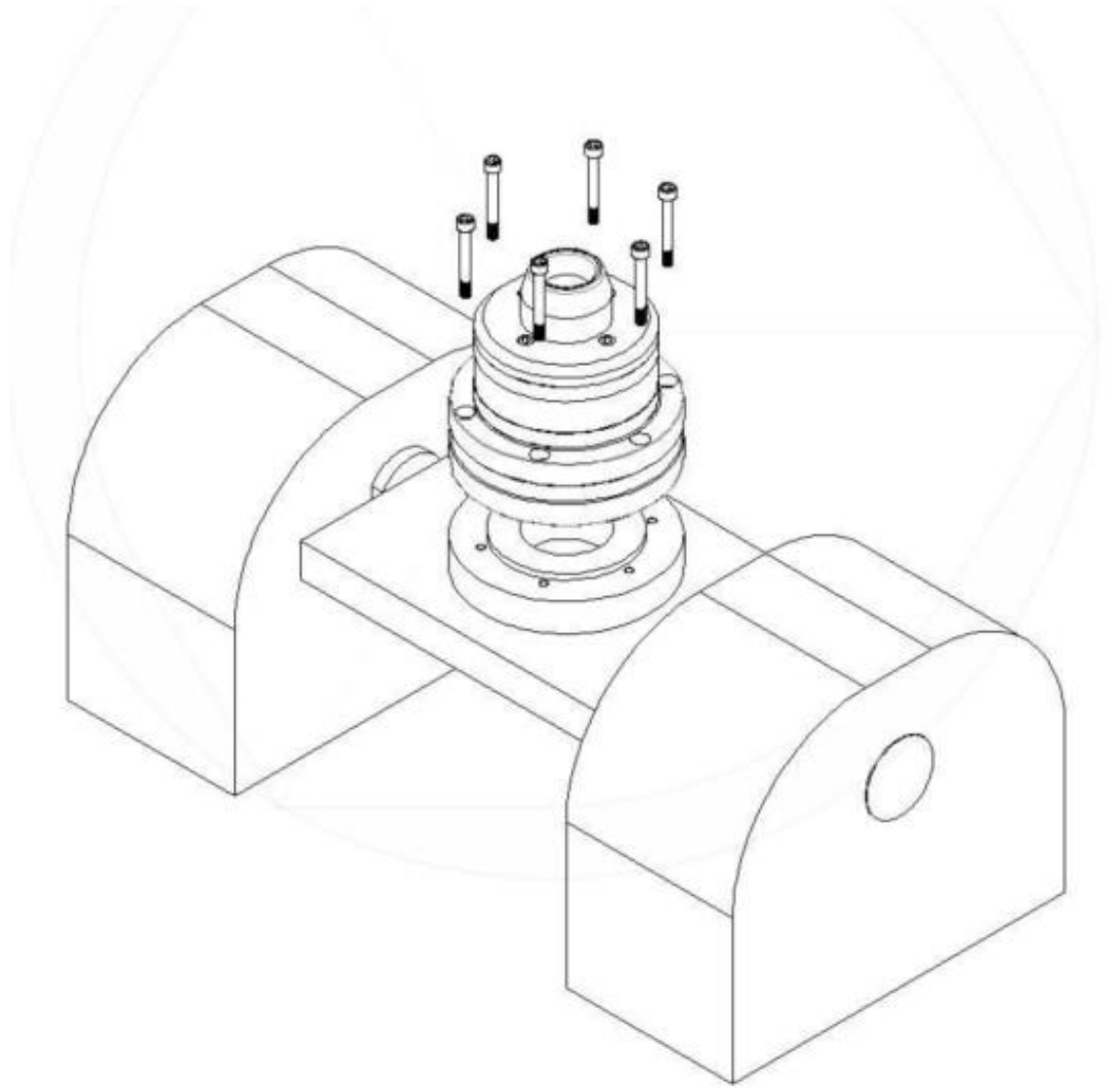
Dimension



Model	GAL-W25	GAS-W25	GAS-16C
A	50	50	80
B	19mm 通孔(最大通孔)	19mm 通孔(最大通孔)	40mm (最大通孔)
C	31	31	49
D	125	125	155
E	127	167	197
F	102	142	166
G	5	5	5
H	PCDΦ 113	PCDΦ 153	PCDΦ 181
Mounting Bolts	6H-M6*55	6H-M6*55	6H-M8*55
Collet Model	W25	W25	16C
Max.R.P.M.	500RPM	3000RPM	2000RPM
Operation Pressure	7KG/cm2	7KG/cm2	7KG/cm2
Gripping Force	1200kg/7kg	2700 kg/7kg	5300 kg/7kg

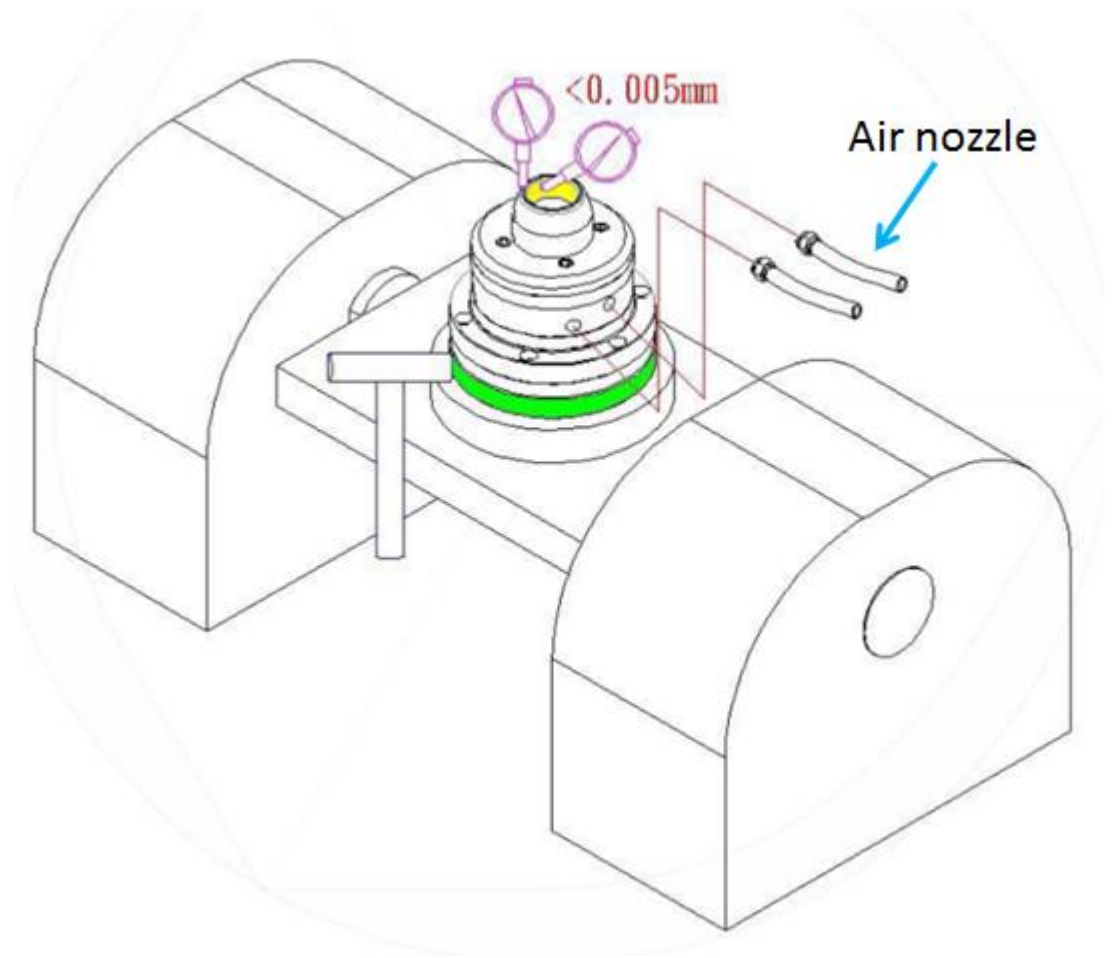
如何安装？

How to installation?



夹头与设备连接盘调整至对应位置，将夹头安装螺丝锁上固定

Adjusting the chuck and equipment's connector to the match position, using screw to fixed.



用锤子校正夹头，锁上气嘴，完成安装

Using hammer to adjust the chuck and lock air nozzle to complete the installation.

注意事项:

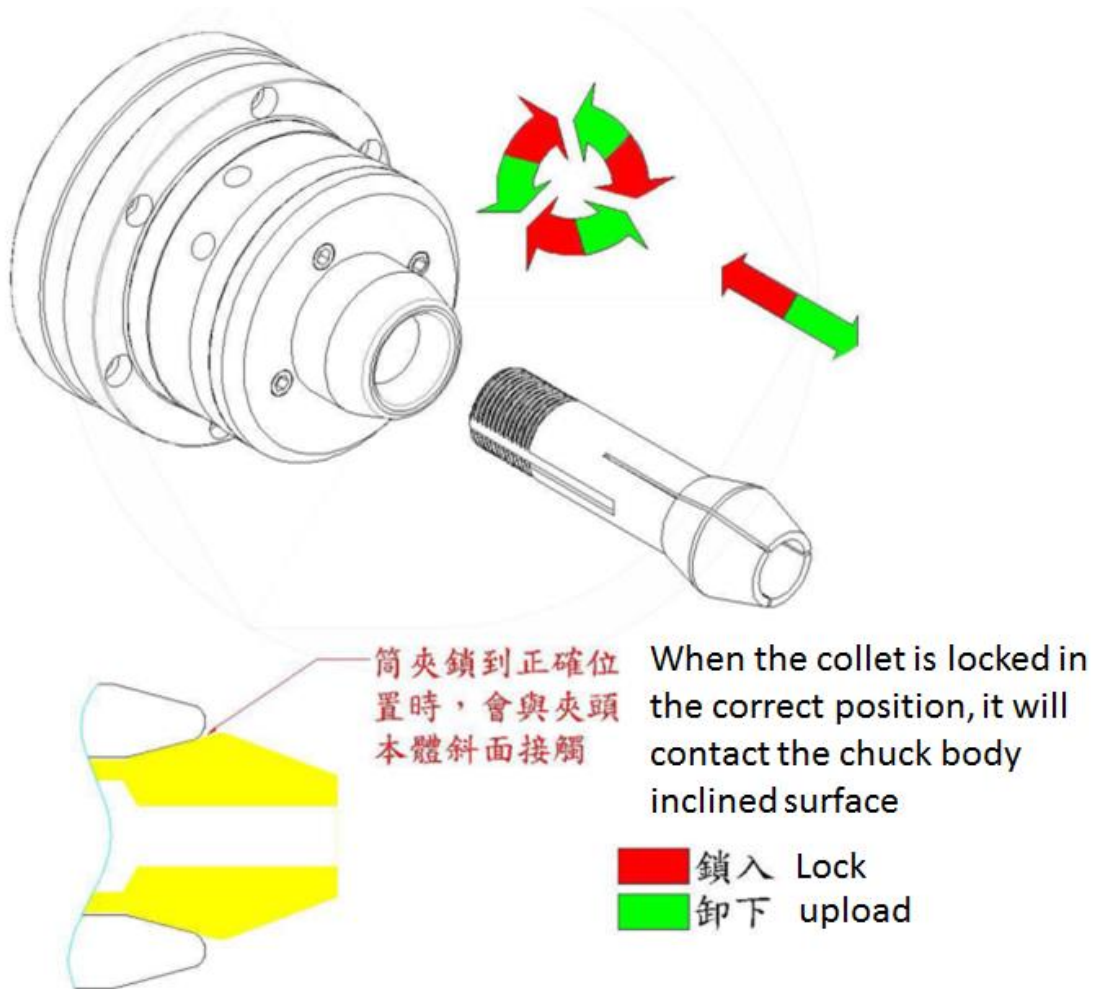
1. 设备与夹头的连接位置平面度必须小于 0.001mm,
2. 夹头校正精度与最终夹持工件精度成正比
3. 必须确认气嘴干净才可以锁入夹头
4. 气嘴锁入夹头不可大力扭紧
5. 气源约 10 分钟给一滴气动油即可

Notice:

1. The planeness of connection position between equipment and chuck must be less than 0.001mm
2. The correction accuracy of the chuck is proportional to the final clamping accuracy of the work-piece
3. Make sure the air nozzle is clean before locking the chuck
4. Do not be tightened the air nozzle when locking
5. Air supply about ten minutes to a drop of pneumatic oil

筒夹安装

Collet installation

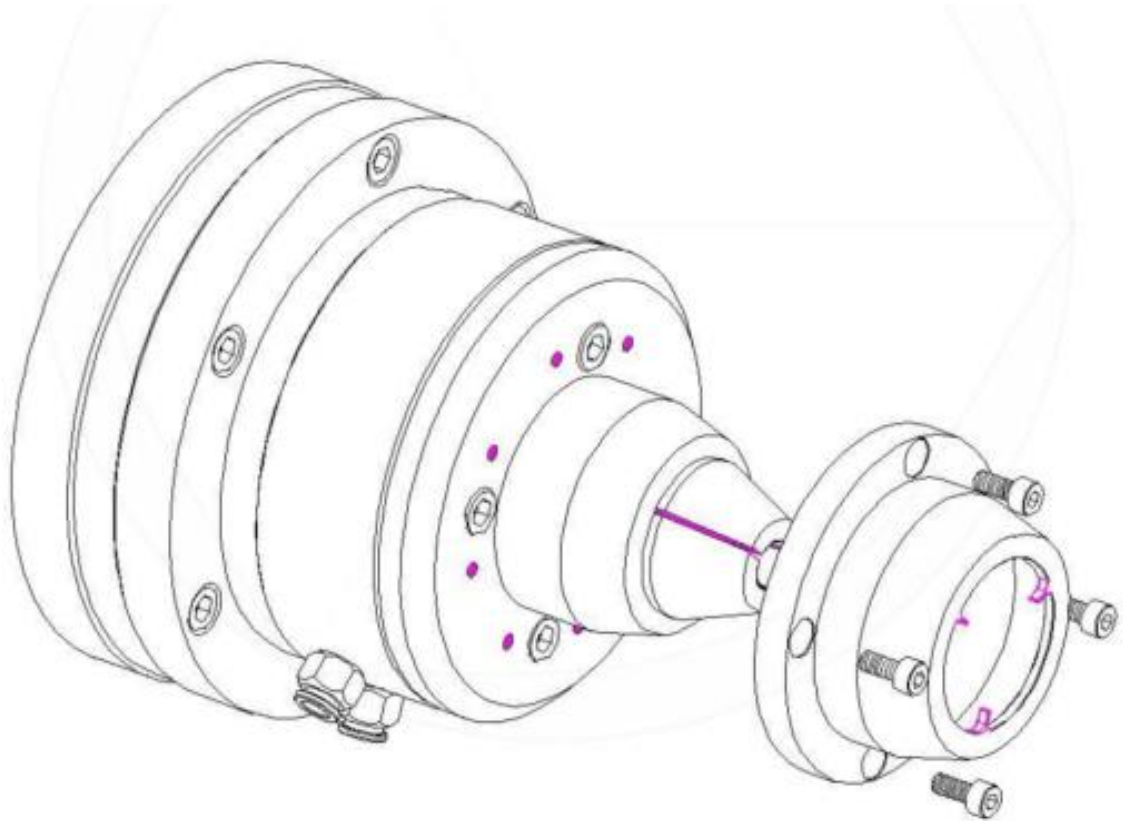


使用与夹头相对应的筒夹型号，将夹头拉杆往前推，依照示意图完成筒夹安装拆卸

Using the collet type corresponding to the chuck, push the collet pull rod forward and complete the collet installation and disassembly according to the schematic diagram

筒夹防止转安装

The collet prevents rotating mounting

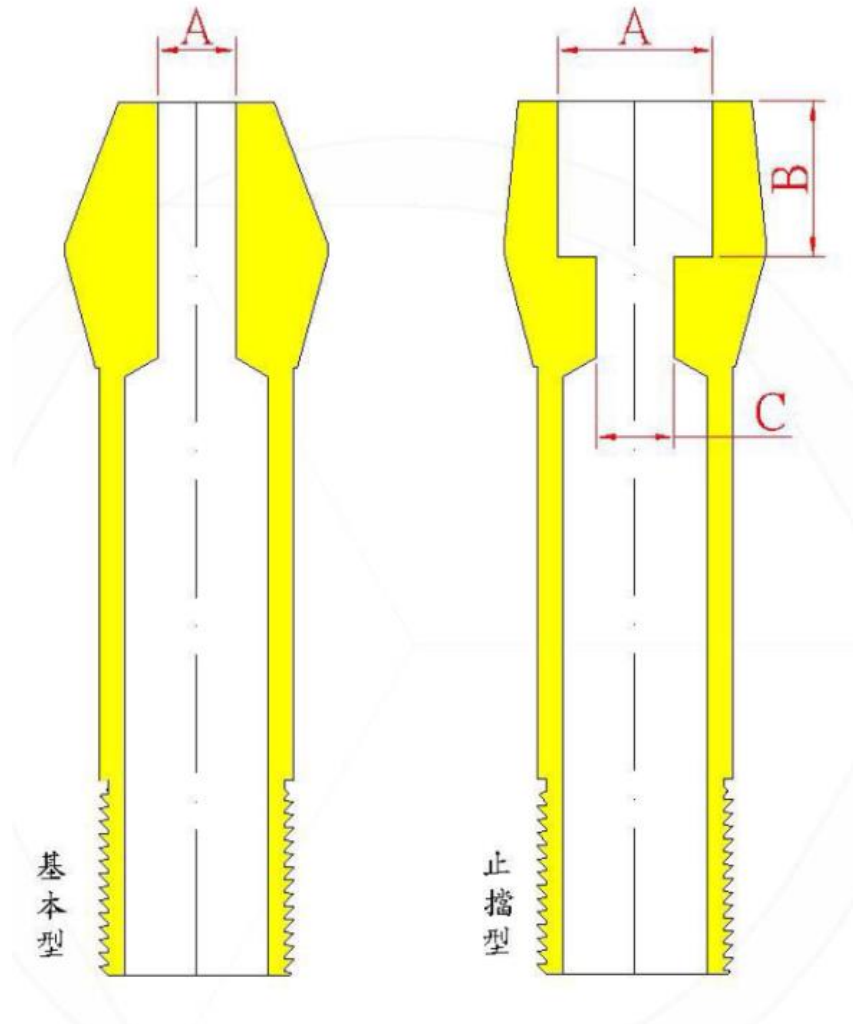


将筒夹防止转扳手的安装孔转至最近的螺丝孔位，锁上螺丝即可完成筒夹防止转动安装

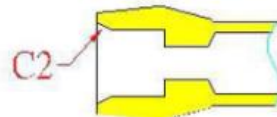
Turn the mounting hole of the collet anti-rotation wrench to the nearest screw hole. Lock the screw to complete the installation of the collet anti-rotation

筒夹订购

Collet order



A	B	C	D
工件尺寸	夾長	承靠讓位尺寸	造型備註
EX :			
$\phi A \times B \times \phi C \times D$			
造型備註(D) 例:前內倒C2(附圖)			



保修证

The warranty card

产品编号 (Product Model) : _____

购买日期 (Date) : _____

保修日期 (Warranty Period) : 一年 (One Year)

故障描述 (Problem Details) : _____

联系方式 (Tel): _____

地址: 东莞市寮步镇良边石大路 136 号

Add: No. 136 Shida Road, Liangbian, Liaobu Town, Dongguan City

注:若夹头出现保修问题请填好信息寄回厂家

Note: if there is any warranty problem with the chuck, please fill in above informations and send it back to the manufacturer